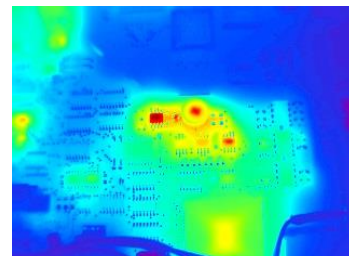


## Locating defects

Commonly known, electronic appliances emit heat. A change in temperature, also referred to as thermic behavior or pattern, may indicate a defective part such as a semiconductor or a cold junction. In order to assess and evaluate the thermic behavior, esz experts rely on an infrared camera. The camera's specification includes 640 x 480 Pixel infrared resolution and 50 mK thermic sensitivity ranging from -30°C to +350°C. A thorough analysis of the camera's live feed enables esz to identify the cause of a defect figuratively at a glance.

esz are one of a few industrial, third-party calibration laboratories capable of additional repair work. With respect to the latter introducing infrared cameras is considered unique. Once again, esz AG are focused and determined to setting the standard within the industry.



Mainboard of a digital tabletop multimeter Keithley 2000

### Contact:

esz AG calibration & metrology  
 Mrs. Meike Hass  
 Phone.: +49 (0)8141-88887-87 – Fax: +49 (0)8141-88887-77  
 E-Mail: m.hass@esz-ag.de – Website: www.esz-ag.de

### 1976 – 2016: celebrating 40 years

esz AG calibration & metrology are one of the leading metrology laboratories in Europe. Core competencies include calibration, repair, asset management and logistical service in the field of industrial measurement technology. Bavaria's ministry of economics recognized esz AG for outstanding business performance among Bavaria's leading organizations.

esz AG is an accredited DAkkS / DKD calibration laboratory (D-K-15019-01-00, DIN EN ISO/IEC 17025:2005). The organization established the accreditation in 1997, entitling esz AG to issue ILAC recognized, accredited calibration reports. Global industry leaders rely on esz AG's excellence. esz AG's is based in Eichenau on the outskirts of Munich, Germany. Branch offices are located in Nuremberg, Steinfurt, Berlin and Vienna. The organization currently employs 130 people.



calibration & metrology

---